



# PROP K UPDATE

---

Citizens' Oversight Committee Meeting  
October 23, 2014

# Prop K Update: Agenda

## A. Program Update

## B. Financial Summary



# Prop K Update: Funding

Funding Source	Amount (\$)
G.O. Bonds – Series A & B	207,042,000
G.O. Bonds – Series C	74,337,000
G.O. Bonds – Series D (anticipated)	5,621,000
<b>Prop K G.O. Bond</b>	<b>287,000,000</b>
Interest (to date)	1,442,000
<b>Prop K Program Funds</b>	<b>288,442,000</b>



# A. Program Update - **CONSTRUCTION**

## Prop K Projects

### **First Round of Projects - \$201,200,000**

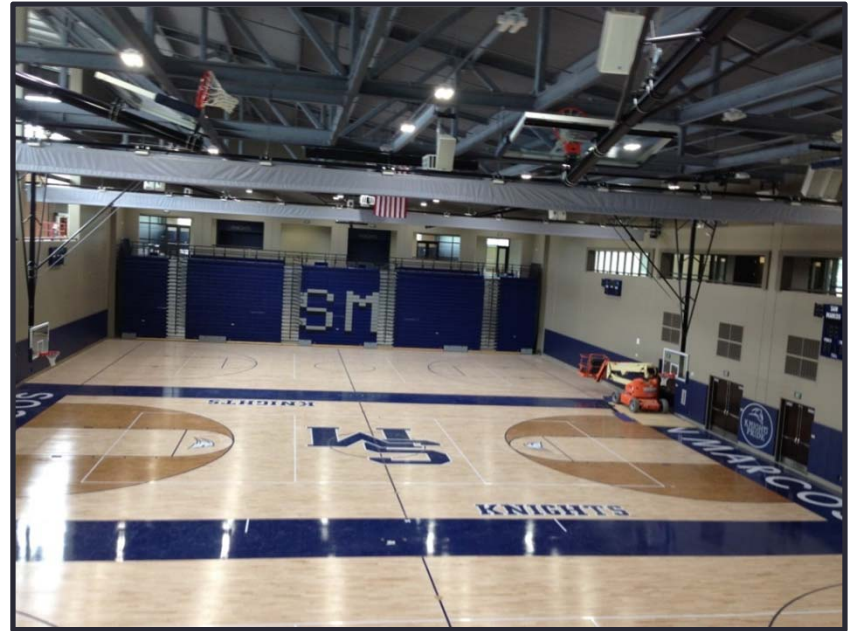
- San Marcos High School Reconstruction Project
- Technology Infrastructure Upgrades Project (District-wide)
- Woodland Park Middle School Modifications Project

# A. Program Update

## San Marcos High School

- Project: Reconstruction
- Status: In Construction
- Scope:
  - Phase 0: Interim Campus - Completed
  - Phase 1: Gym, Applied Sciences, M&O - Completed
  - Phase 2: All Buildings - Completed
  - Phase 3: Fields and Parking - **Completed**
  - *Phase 4: Baseball/Softball Fields*
- Schedule:
  - June 2011 – August/September 2014
    - Final Completion delay for additional on-campus parking
  - Phase 4: Anticipated completion date is January/February 2015 (dependent upon weather)
- Prop K Budget:
  - \$ 180,000,000 – project budget\*

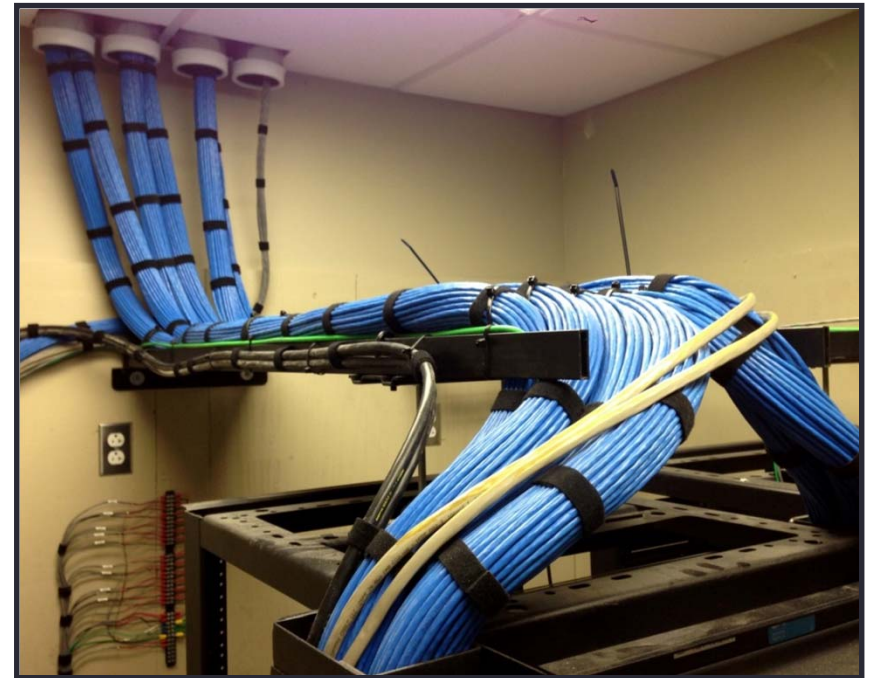
\*Note: Includes cost of Interim Campus



# A. Program Update

## Technology Infrastructure Upgrades

- Projects:
  - Phase 1 – Tech Hub, MHHS, LCM, PAL
  - Phase 2 – SEMS, KH, RL, TOES
  - Phase 3 – CAR, DSC, SEES, WPMS, FHS, M&O
  - **Phase 3.5 – AD, JAL, SME, TOHS**
  - Phase 4: Future A/V and technology equipment
  - E-Rate Technology at SMMS (*AD, TOHS not approved*)
  - Minor Technology project at WPMS
- Status:
  - Phase 1: **Completed**
  - Phase 2: **90% Complete**
  - Phase 3: **Out to Bid**
  - **Phase 3.5: Pre-construction**
  - Phase 4: Planning
  - AD E-Rate and WPMS Tech: Completed
  - SMMS: **Completed**
- Scope:
  - Upgrade technology infrastructure throughout the campuses
    - Fiber cables and conduit between buildings, network electronics, switches, routers, *phone and paging systems, MDF*
  - Modernize technology infrastructure in the classroom
    - Wires, copper cables, wireless access points, IDF
  - Prepare for Common Core technology requirements
  - Provide minimal security cameras



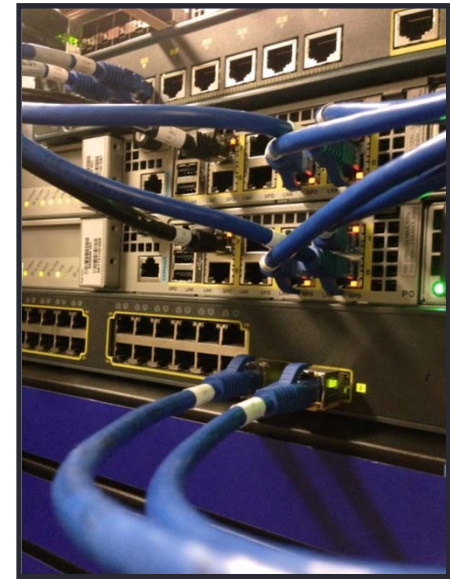




# A. Program Update

## Technology-Related Projects

- Project: E-Rate and Minor Technology Projects
- Budget:
  - \$ **788,956** (Prop K portion)
  - \$ **428,369** (E-Rate grant)
  - \$ 136,603 (District Funds)
  - \$ 1,443,698 (Total project cost)



School	Prop K Funds	E-Rate Funds	District Funds	Total Project Funds	Fiscal Year
San Marcos ES	<del>0</del> 389,453	<del>389,453</del>	136,603	526,056	2010-11
Alvin Dunn ES	<del>89,770</del> 266,012	<del>266,012</del>	0	355,782	2012-13
Woodland Park MS	18,862	N/A	0	18,862	2012-13
San Marcos MS	114,629	428,369	0	542,998	2013-14
<b>Total</b>	<del>223,261</del> 788,956	<del>1,083,834</del> 428,369	136,603	1,443,698	

Note: E-rate funding is predicated upon 90% E-rate funding must be supplemented by a minimum of 10% District funding.



# A. Program Update

## Woodland Park Middle School

- Project: Classroom and Admin Modifications
- Status: **100% Completed**
  - Gate hardware modifications
  - Art Room floor moisture modifications
- Scope:
  - Modernize two (2) classrooms
  - Remodel Administration Building
  - Construct Staff Restroom
  - Front Entry “Beautification” and water intrusion repair
  - Floor moisture mitigation
  - Phase 1: Flooring and Paint Modifications
  - Phase 2: DSA-related Modifications
- Schedule:
  - PH 1: August 1 – September 1, 2013 - Completed
  - PH 2: October 14, 2013 – August 2014  
– 100% Completed
- Budget:
  - Total Project: \$ 1,199,850
    - Construction Bid: \$ 946,530 (LLB)
      - Additional Cost due to DSA-related accessibility mandates



New Front Entry

# A. Program Update - CONSTRUCTION

## Prop K Projects

Projects	Projected Estimates (\$)
San Marcos High School Reconstruction Project	180,000,000
Technology Infrastructure Upgrades Project (District-wide)	20,000,000
Woodland Park Middle School Modifications Project	1,200,000
<b>TOTAL</b>	<b>201,200,000</b>

# A. Program Update - Prop K Projects

## **Completed Summer 2014 Projects**

- Shade Shelters Re-use Projects (MHHS, SME)
- San Elijo MS: Shade Shelter/Site Expansion Project
- Discovery ES: Shade Shelter/Walkway Repair Project

# A. Program Update - Prop K Projects

## San Elijo Middle School





# A. Program Update - Prop K Projects

## San Elijo Middle School



# A. Program Update - Prop K Projects

## San Elijo Middle School





# A. Program Update - Prop K Projects

## San Elijo Middle School





# A. Program Update - Prop K Projects

## Discovery Elementary School

- **Facilities Needs for 2014-2015**
  - New Shade Shelter and reconstruct Walkway Cover



# A. Program Update - Prop K Projects

## Discovery ES





# A. Program Update - Prop K Projects

## San Marcos Elementary School

- **Facilities Needs for 2014-2015**
  - New shade shelter for Kindergarten area



# A. Program Update - Prop K Projects

## Mission Hills High School

- **Facilities Needs for 2014-2015**
  - New shade shelter for art and outdoor classroom



# A. Program Update - **CONSTRUCTION**

## Prop K Projects

### **2014 Projects in construction**

- Technology Infrastructure Projects
- Carrillo ES: New Classrooms Project
- San Marcos ES: New Classrooms Project
- Alvin Dunn ES: “Curb Appeal” Project





## A. Program Update – Construction Projects

### Technology Infrastructure Projects

- 9 of 19 campuses completed
- Includes M&O and District Office (the “Hub”)



# A. Program Update – Construction Projects

## San Marcos ES





# A. Program Update – Construction Projects

## San Marcos ES



# A. Program Update – Construction Projects

## Carrillo ES

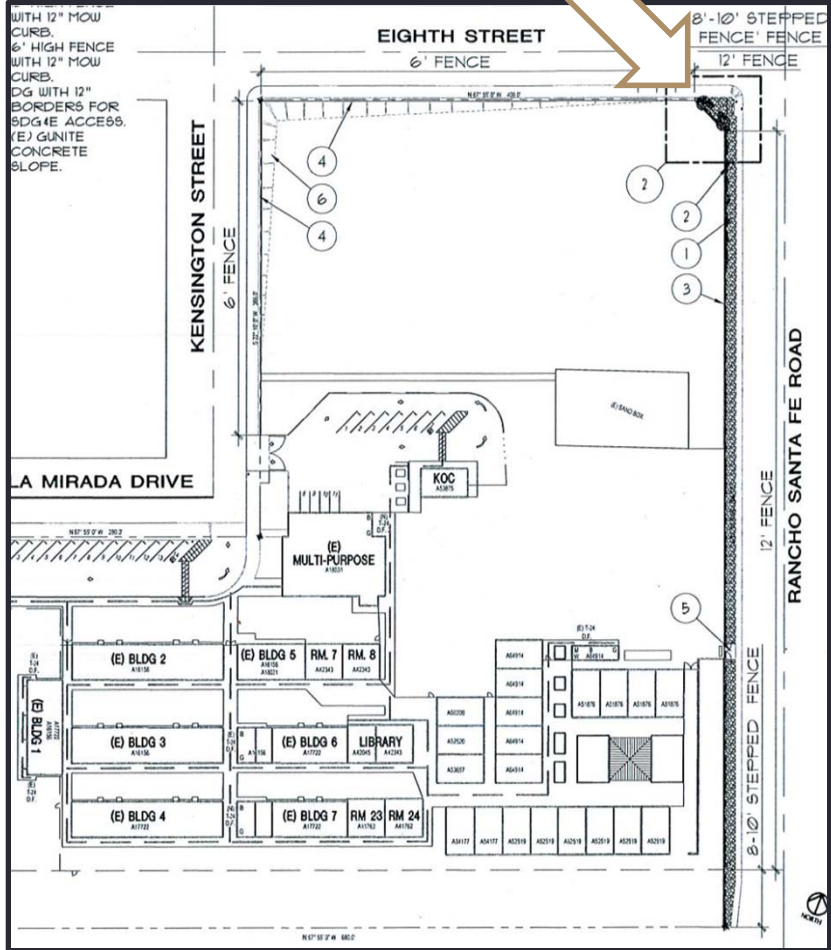
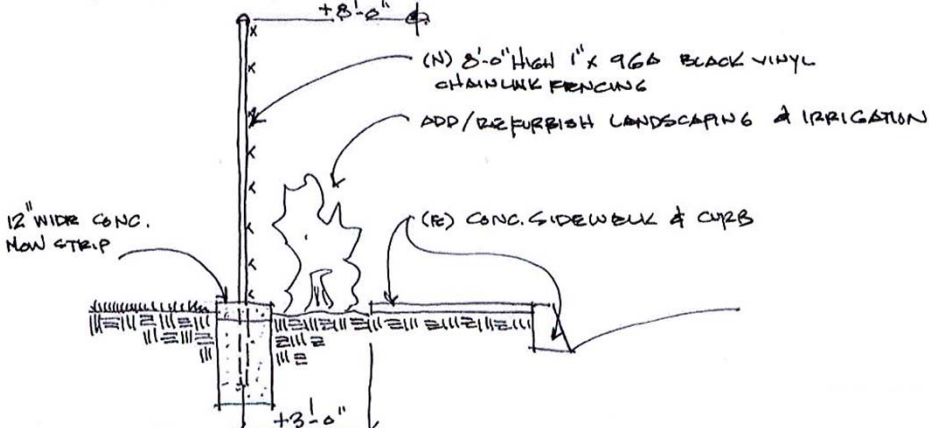


## A. Program Update - CONSTRUCTION

## • Facilities Needs for 2014-2015

- Alvin Dunn ES
- New perimeter fence

## Proposed Fencing Plan for Alvin Dunn Middle School

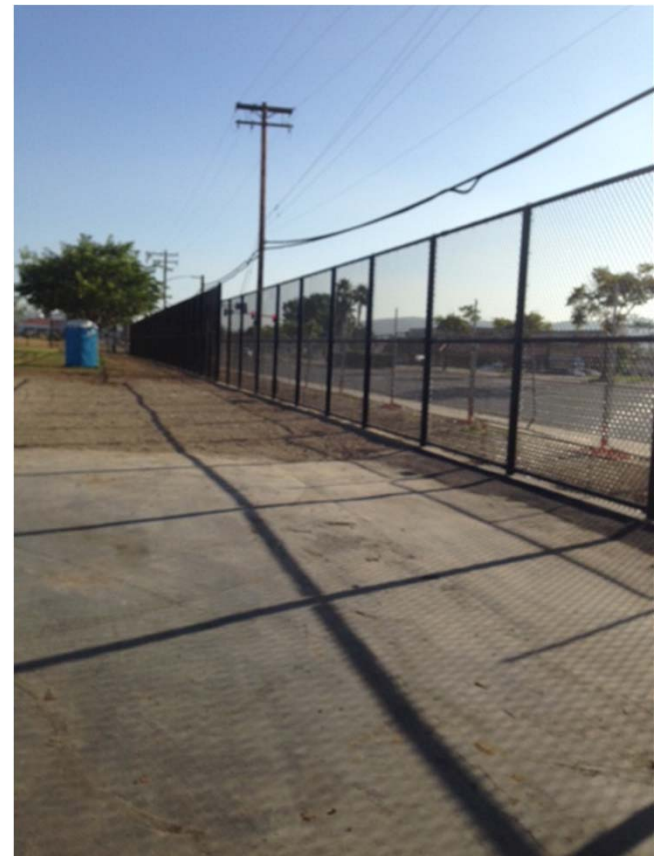




# A. Program Update - Prop K Projects

## Alvin Dunn “Curb Appeal” Project

- Facilities Needs for 2014-2015
  - New perimeter fence



# A. Program Update - CONSTRUCTION

## Prop K Projects

### Projects in planning/design

- Water Wells Projects
- *Additional Shade Shelter Projects*
  - *Hard cover - TOES, SMMS, WPMS, CAR*
  - *Fabric cover - Elementary schools*
- *TOHS Security Fencing Project*

# A. Program Update - CONSTRUCTION

## Prop K Projects

Projects	Projected Estimates (\$)
Shade Shelters Re-use Project (MHHS, SME, TOES from SMHS)	349,800
San Elijo MS: Shade Shelter/Hardcourts Expansion Project	607,500
Discovery ES: Shade Shelter/Walkway Repair Project	<b>569,000</b>
Carrillo ES: 2014 New Classrooms Building Project	<b>3,498,600</b>
San Marcos ES: 2014 New Classrooms Building Project	2,525,100
Alvin Dunn ES: "Curb Appeal" Project	<b>557,000</b>
Water Wells Project - SEMS	<b>125,000</b>
<b><i>Shade Shelter Projects</i></b>	<b>1,168,000</b>
<b><i>TOHS Security Fencing Project</i></b>	<b>121,000</b>
<b>PROJECTED TOTAL</b>	<b>9,521,000</b>

# A. Program Update – PLANNING/DESIGN

## Prop K Projects

### **Anticipated Projects\***

- La Costa Meadows: Reconstruction Project
- San Marcos MS: Portables Replacement Project
- Alvin Dunn ES: K-8 Expansion Project
- \*Richland ES: Reconfiguration Project
- \*Paloma ES, Knob Hill ES Portable Replacement Projects
- \*Various other sites

\*Note: Projects dependent upon additional funding from Series D, State Funding, and integration of Prop 39 funds.



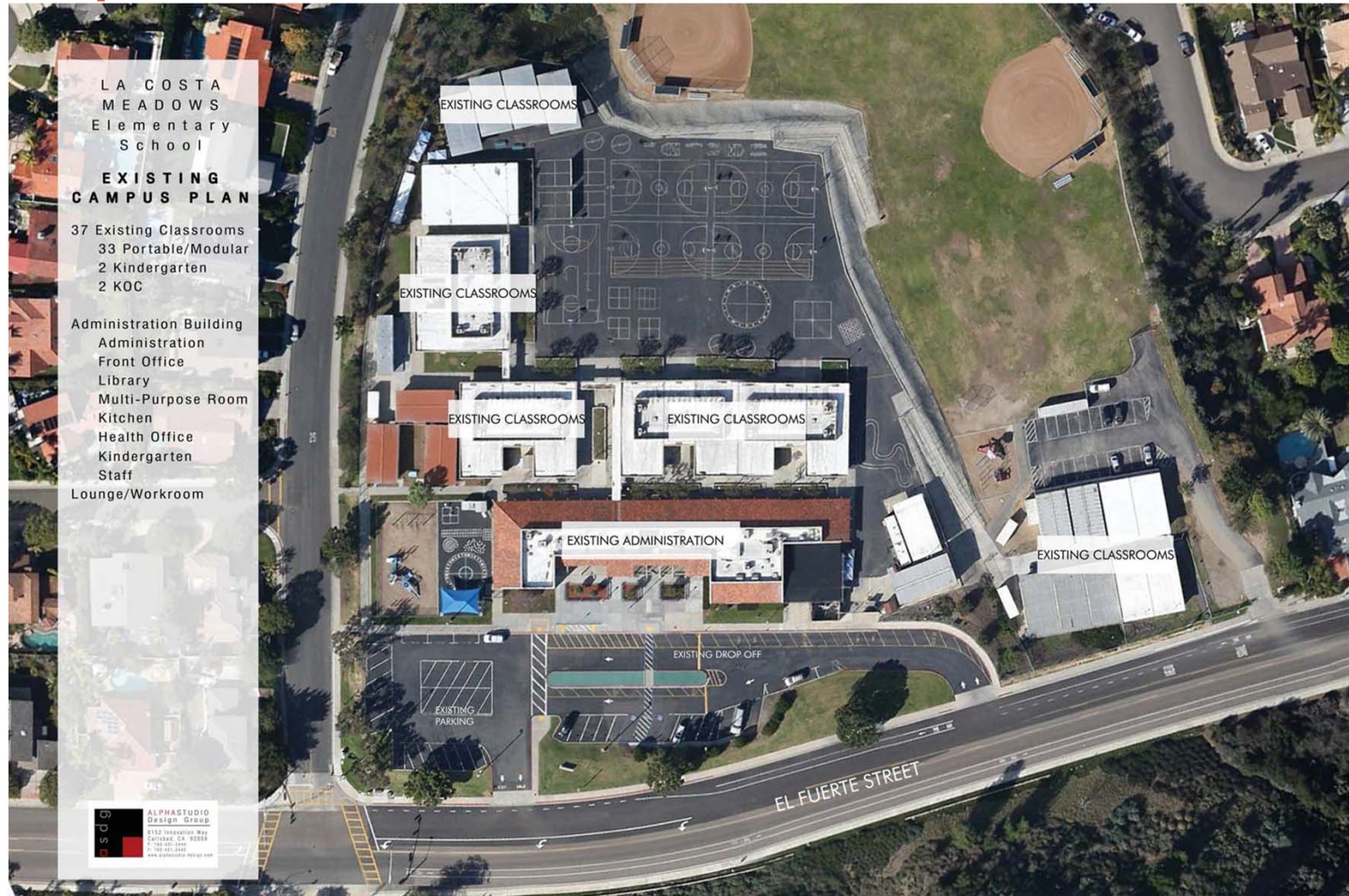
# Prop K: Series 'C' Funds Allocation

Funding Source	Amount (\$)
G.O. Bonds – Series C	74,337,000

Projects	Abbr.	Projected Estimates (\$)
La Costa Meadows ES: Reconstruction Project	LCM	33,000,000
San Marcos MS: Enhancement Project	SMMS	24,000,000
Alvin Dunn ES: Enhancement Project	AD	17,000,000
Richland ES: Enhancement Project*	RL	0
<b>TOTAL</b>		<b>74,000,000</b>

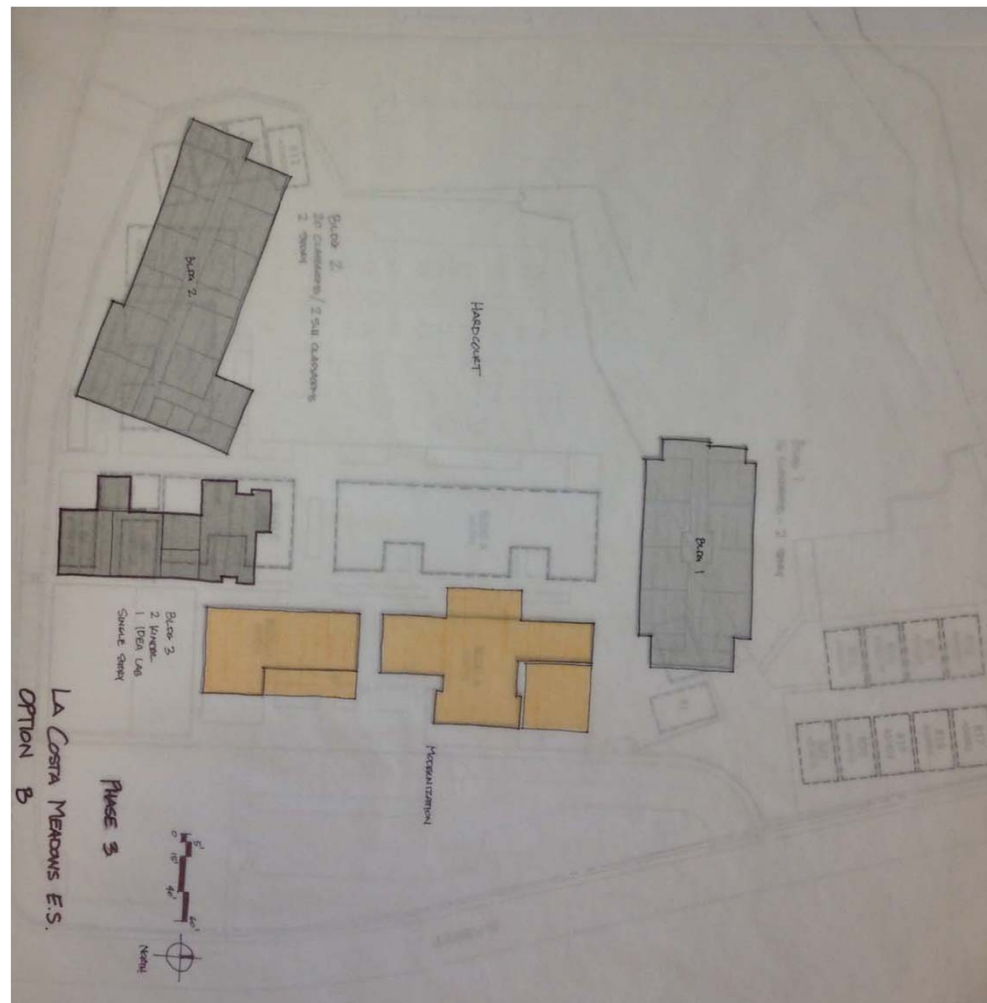
\*Planning and Design only for future available funds

# Prop K: La Costa Meadows Reconstruction Project



\*Planning and Design only for future available funds

# Prop K: La Costa Meadows Reconstruction Project

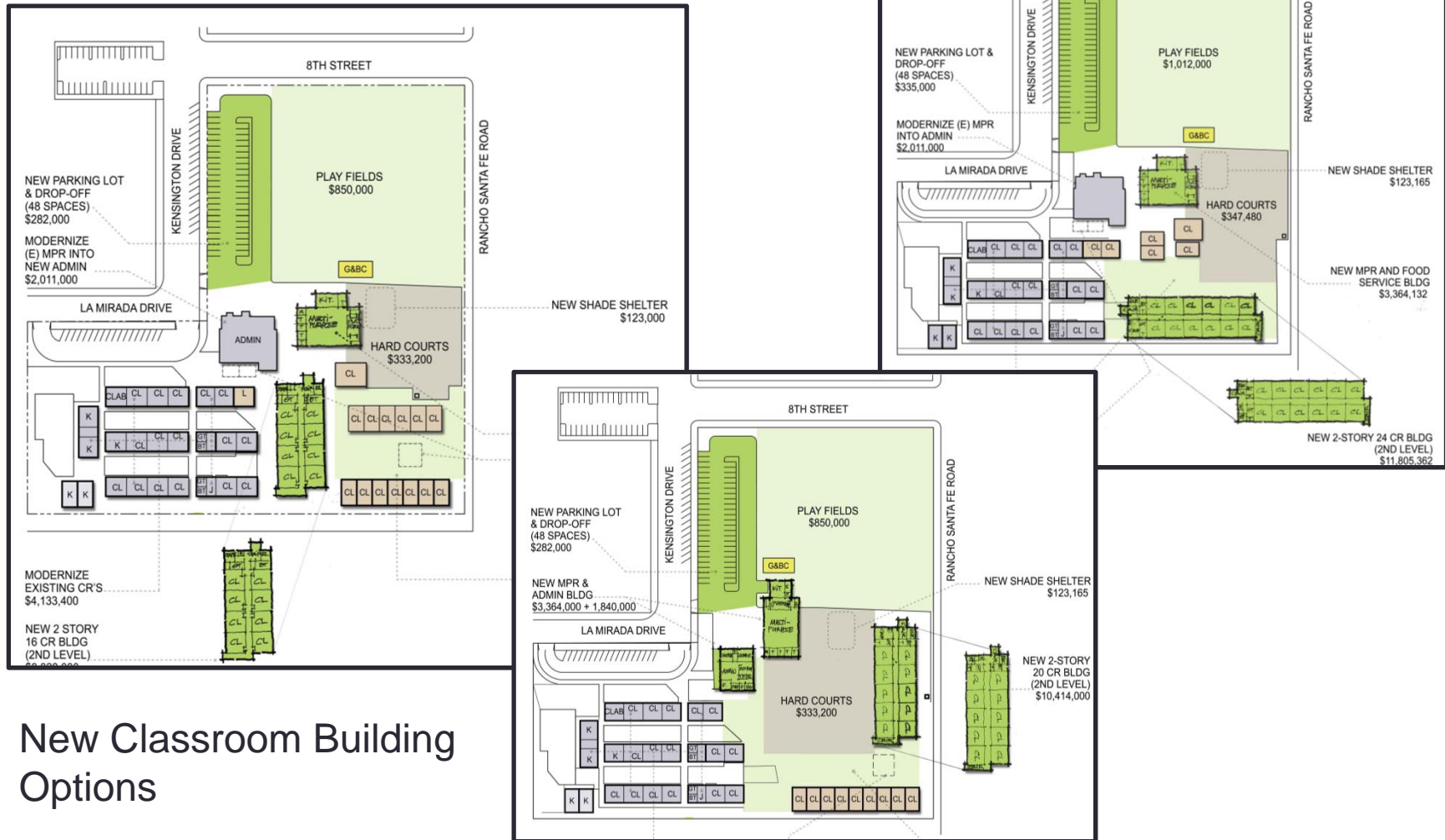


\*Planning and Design only for future available funds





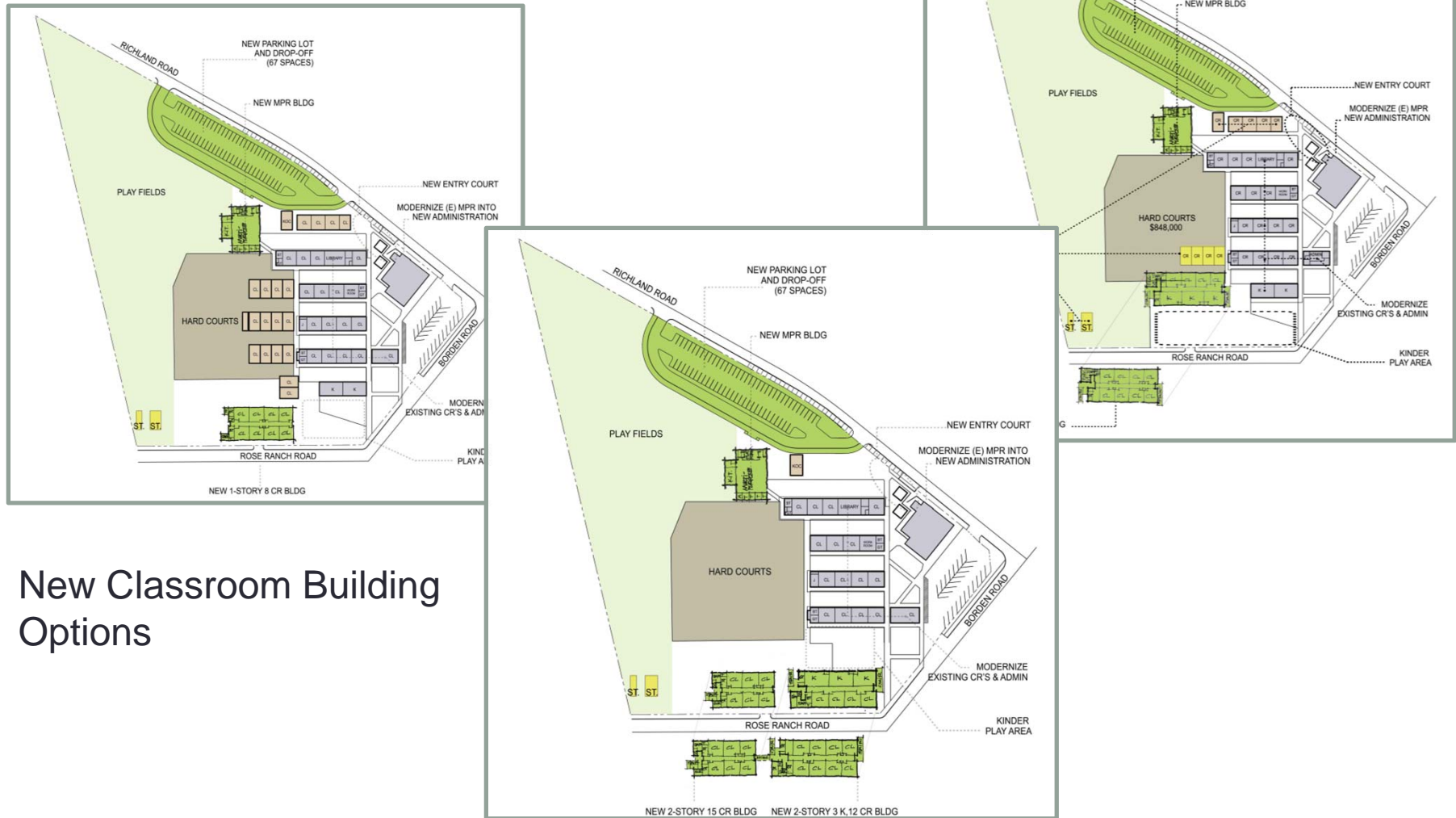
# Prop K: Alvin Dunn Elementary School Enhancement Project



New Classroom Building Options



# Prop K: Richland Elementary School Enhancement Project



New Classroom Building Options

# Planning & Building Schedule

Schedule	No. of Months*	Completion Dates*
Planning	2	October 2014
Design	4-6	April 2015
Agency Review	6	October 2015
Bid	2	December 2015
Construction	12-18	July 2016
<b>Total for Occupancy</b>	<b>26 - 34</b>	

\*Depends on scopes of work, temporary facilities, and phases of construction.

# B. Financial Summary

Accounting Update – September 30, 2014

Bond Resources	\$ 281,378,598
Interest Earnings (as of June 30, 2014)	\$ 1,442,160
<b>Total Resources</b>	<b>\$ 282,820,758</b>

## **Prop K Bond Construction Budget**

<b><u>Project</u></b>	<b><u>Project Budget</u></b>	<b><u>Expenditures to date</u></b>
San Marcos High School	\$ 180,000,000	\$ 163,314,536
Anticipated Savings from SMHS	- \$ 1,000,000	\$ 0
Technology Infrastructure	\$ 20,000,000	\$ 3,309,213
Anticipated Savings from Tech. Infrastructure	- \$ 1,000,000	\$ 0
Woodland Park Middle School	\$ 1,199,850	\$ 1,147,318
Summer 2014 and Summer 2015 Projects	\$ 9,520,908	\$ 3,878,165
La Costa Meadows Elementary School	\$ 33,000,000	\$ 1,386
San Marcos Middle School	\$ 24,000,000	\$ 1,672
Alvin Dunn Elementary School	\$ 17,000,000	\$ 293,950
Richland Elementary School	\$ 100,000	\$ 1,437
<b>TOTAL PROJECTS</b>	<b>\$ 282,820,758</b>	<b>\$ 171,947,677</b>



# QUESTIONS?

## PROP K: UPDATE

---

Citizens' Oversight Committee Meeting

October 23, 2014





THANK YOU

## PROP K: UPDATE

---

Citizens' Oversight Committee Meeting  
October 23, 2014